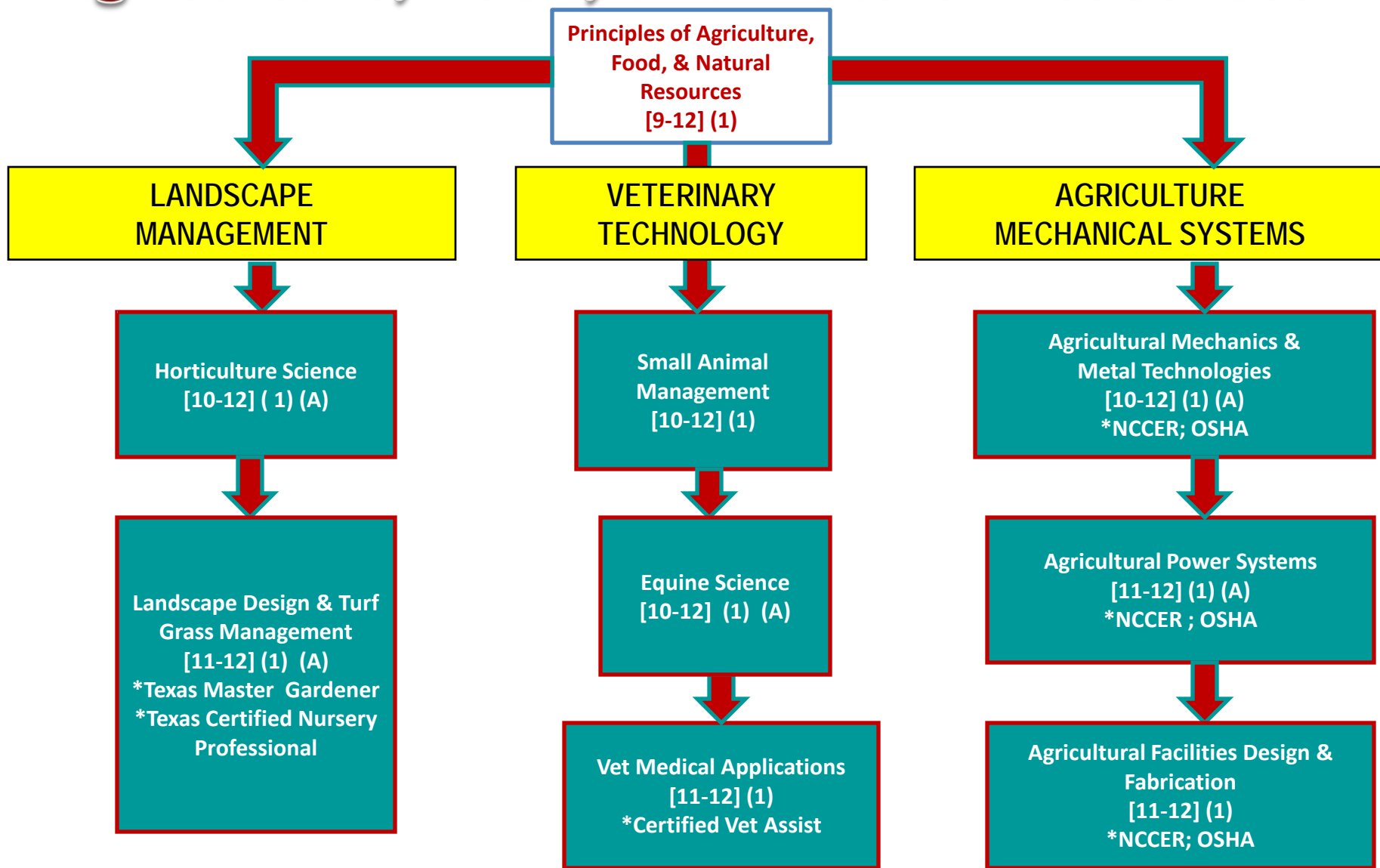


Revision Date: 12-6-10

FLOW CHART of CTE Courses
2011-12

REL ONLY

Agriculture, Food, and Natural Resources



A = Advanced Technical Credit. *License or Certification

Architecture and Construction

ARCHITECTURAL
DESIGN

CONSTRUCTION
MANAGEMENT

INTERIOR
DESIGN

HVAC &
REFRIGERATION

Principles of Architecture and Construction
[9-12] (1) (A)

Engineering Design &
Presentation
[10-12] (1) (A)
*Autodesk

Architectural Design
*Autodesk; Chief
Architect
[11-12] (1)

Advanced Architectural
Design
[12] (2)
*Autodesk; Chief
Architect

Construction
Technology
[10-12] (2) (A)
*OSHA

Advanced
Construction
Technology
[11-12] (2)
*NCCER; OSHA

Interior Design
[10-12] (1) (A)

Advanced Interior
Design
[11-12] (2)
*Chief Architect

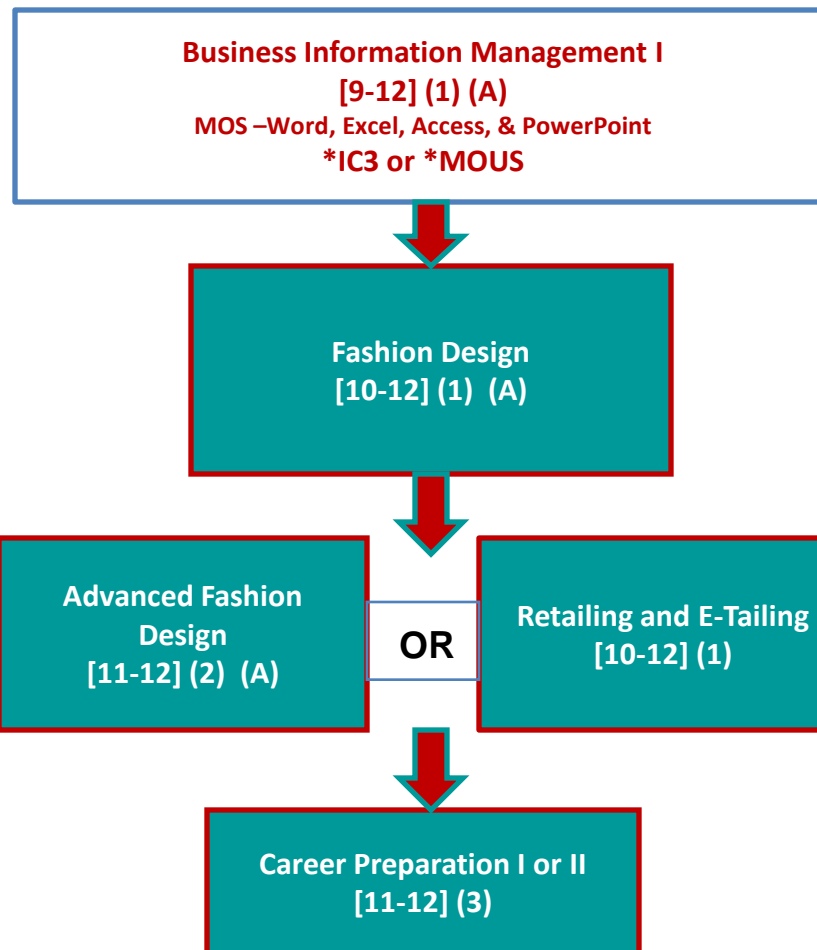
Construction
Technology
[10-12] (2) (A)
*OSHA

HVAC &
Refrigeration
Technology
[11-12] (2)
TJC Dual Credit

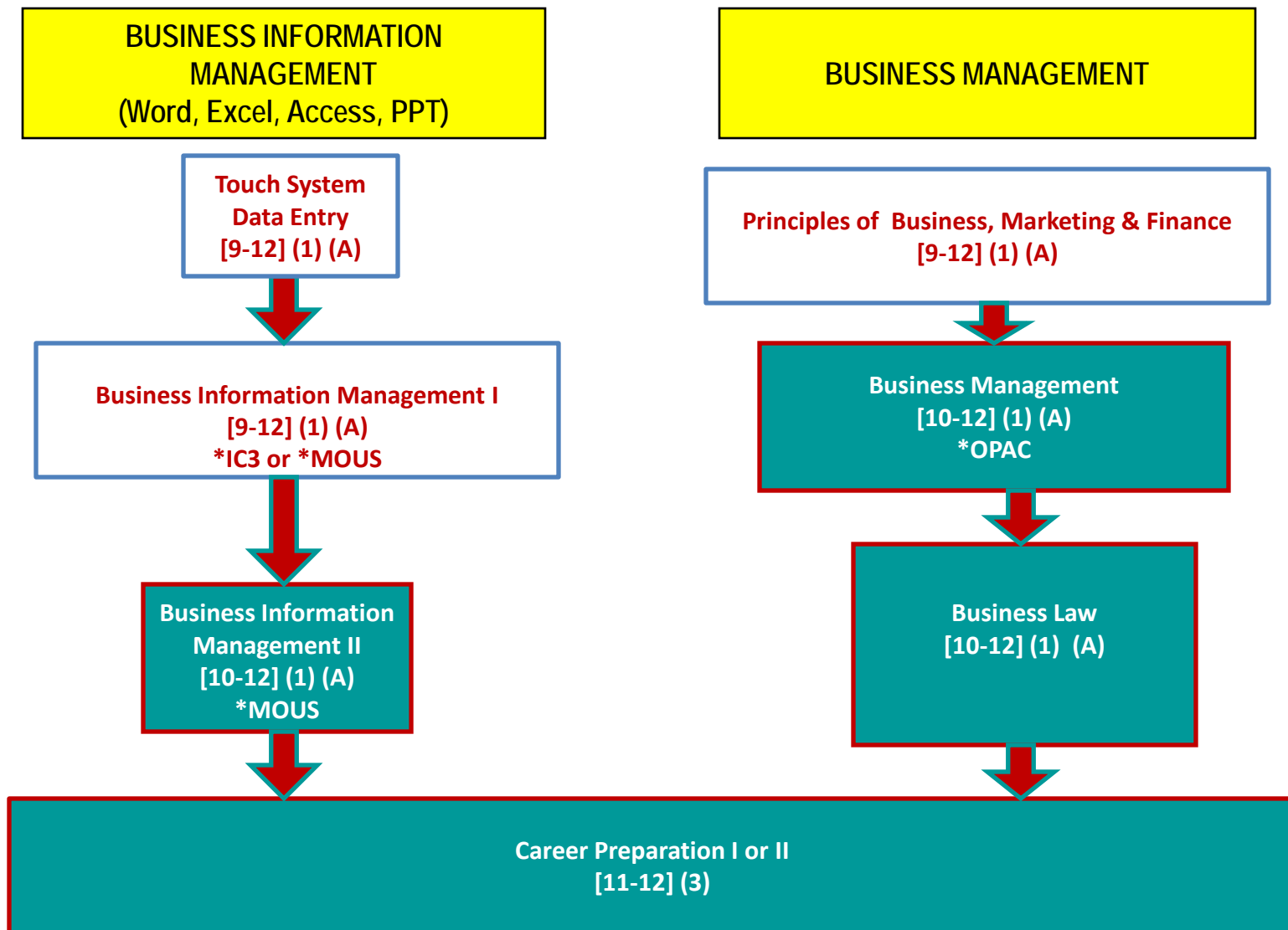
Advanced HVAC &
Refrigeration
Technology
[12] (2) (A)
*HVAC Cert
TJC Dual Credit

Arts, A/V Technology & Communications

FASHION DESIGN



Business Management & Administration



Education & Training

**EDUCATIONAL
CAREERS**

Business Information Management I
[9-12] (1) (A)
*IC3 or *MOUS



Human Growth and Development
[10-12] (1)



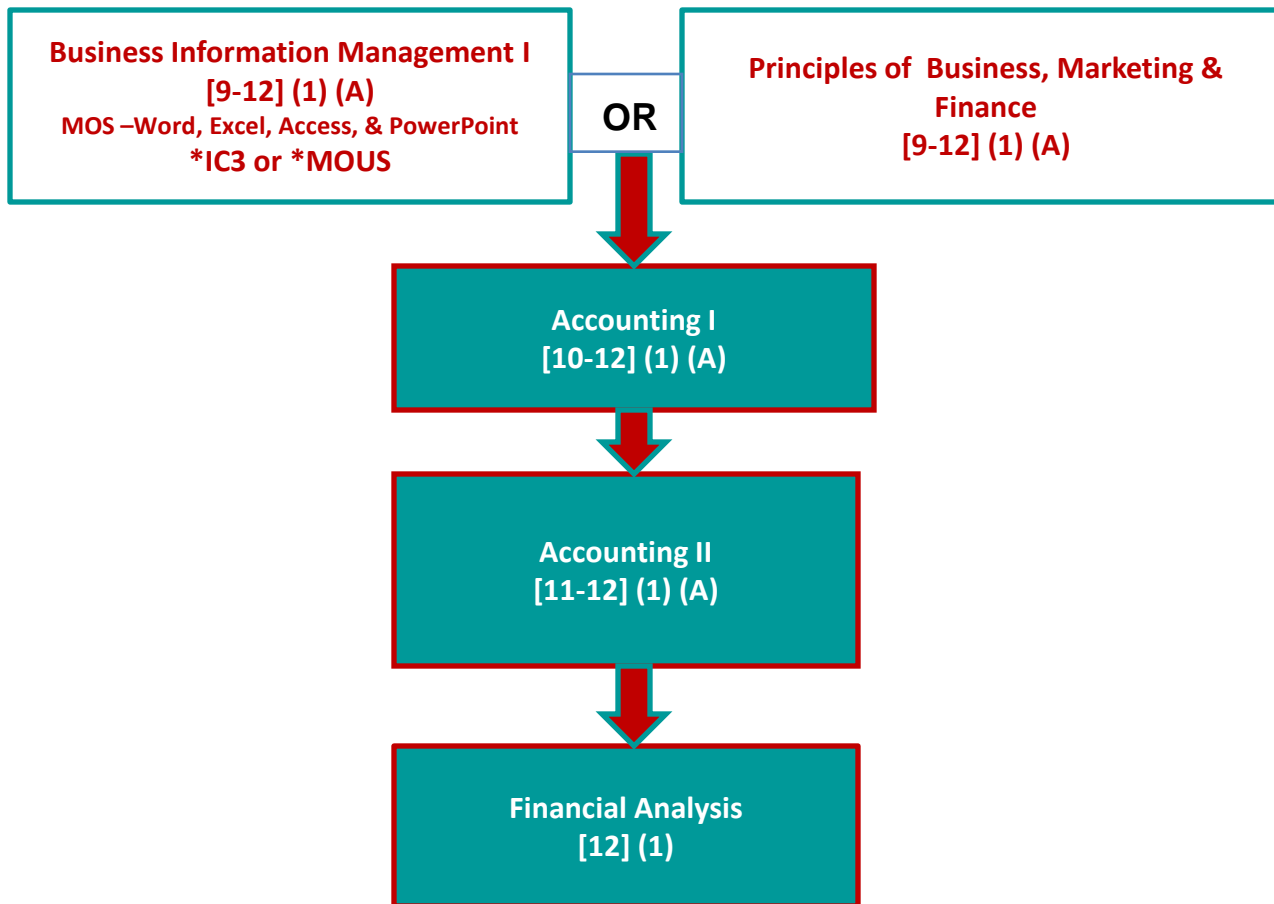
**Instructional Practices in Education
& Training**
[11-12] (2)



Practicum in Education & Training
[12] (2)
*Educational Aide Certificate I

Finance

BANKING, FINANCE, INVESTMENTS



Health Science

**PHARMACY
TECHNICIAN**

**CERTIFIED
NURSE AIDE**

**MEDICAL BILLING
& CODING**

**EMERGENCY
MEDICAL
TECHNICIAN**

Principles of Health Science
[9th ONLY] (1) (A)
*CPR and/or *First Aid

Health Science
[10-12] (1) (A)

**Practicum in
Health Science**
[11-12] (2)

Combined
course

**Medical
Terminology**
[11-12] (A)

Practicum in Health Science II
[12] (2)

*Pharmacy Tech

**Practicum in Health
Science II**
[12] (2)

*Certified Nurse Aide

Practicum in Health Science II
[12] (2)

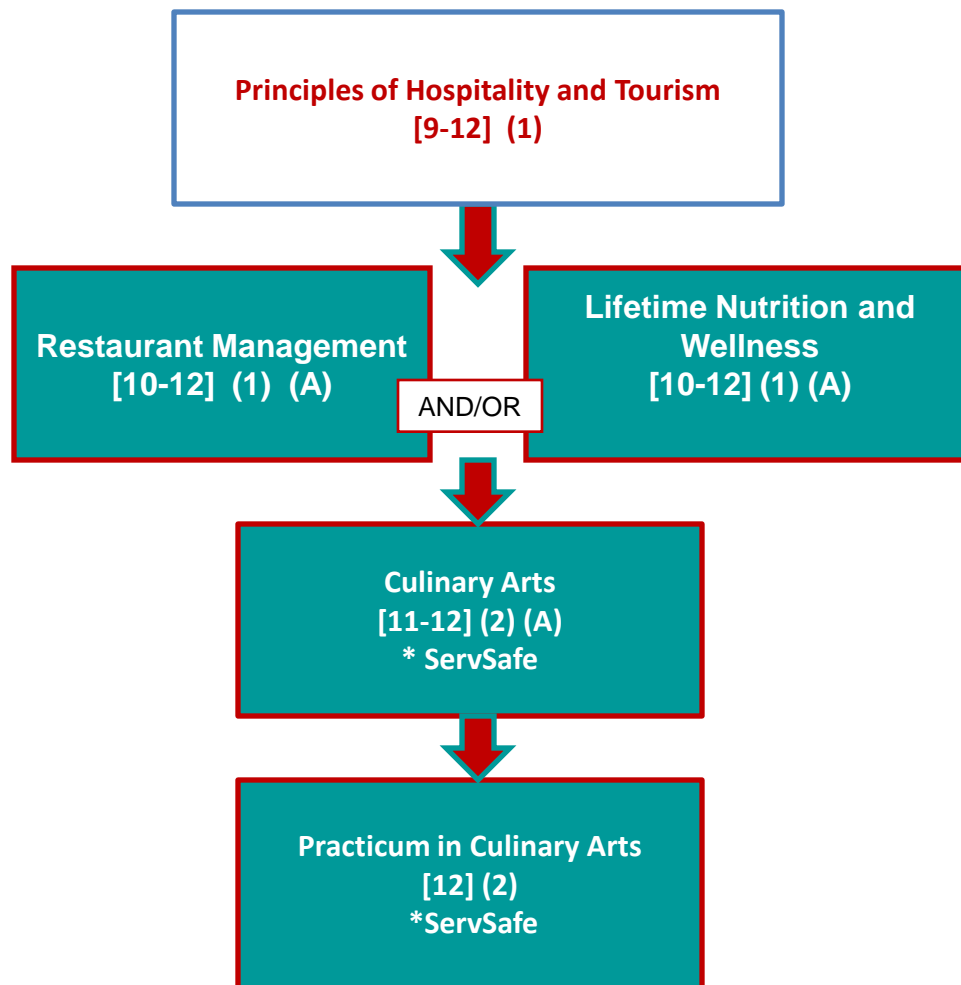
*Insurance Coding Specialist

Practicum in Health Science
[12] (2)

*Emergency Medical
Technician - Basic
TJC Dual Credit

Hospitality & Tourism

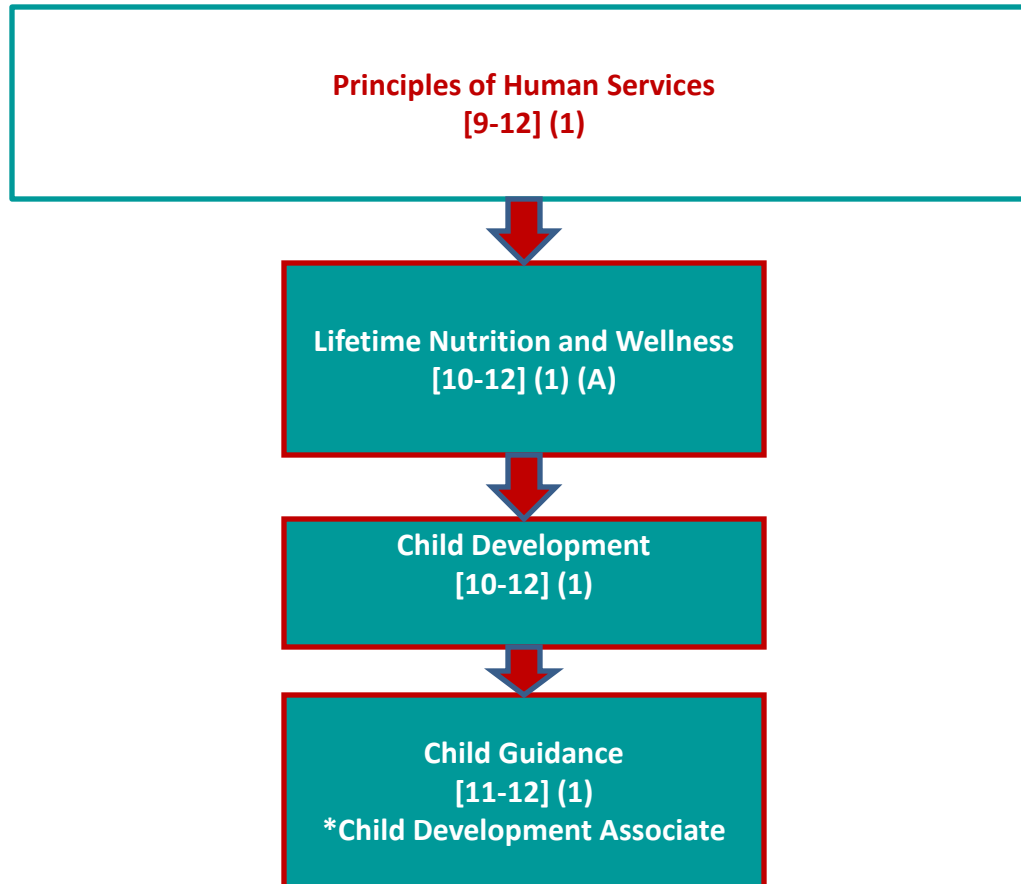
CULINARY ARTS



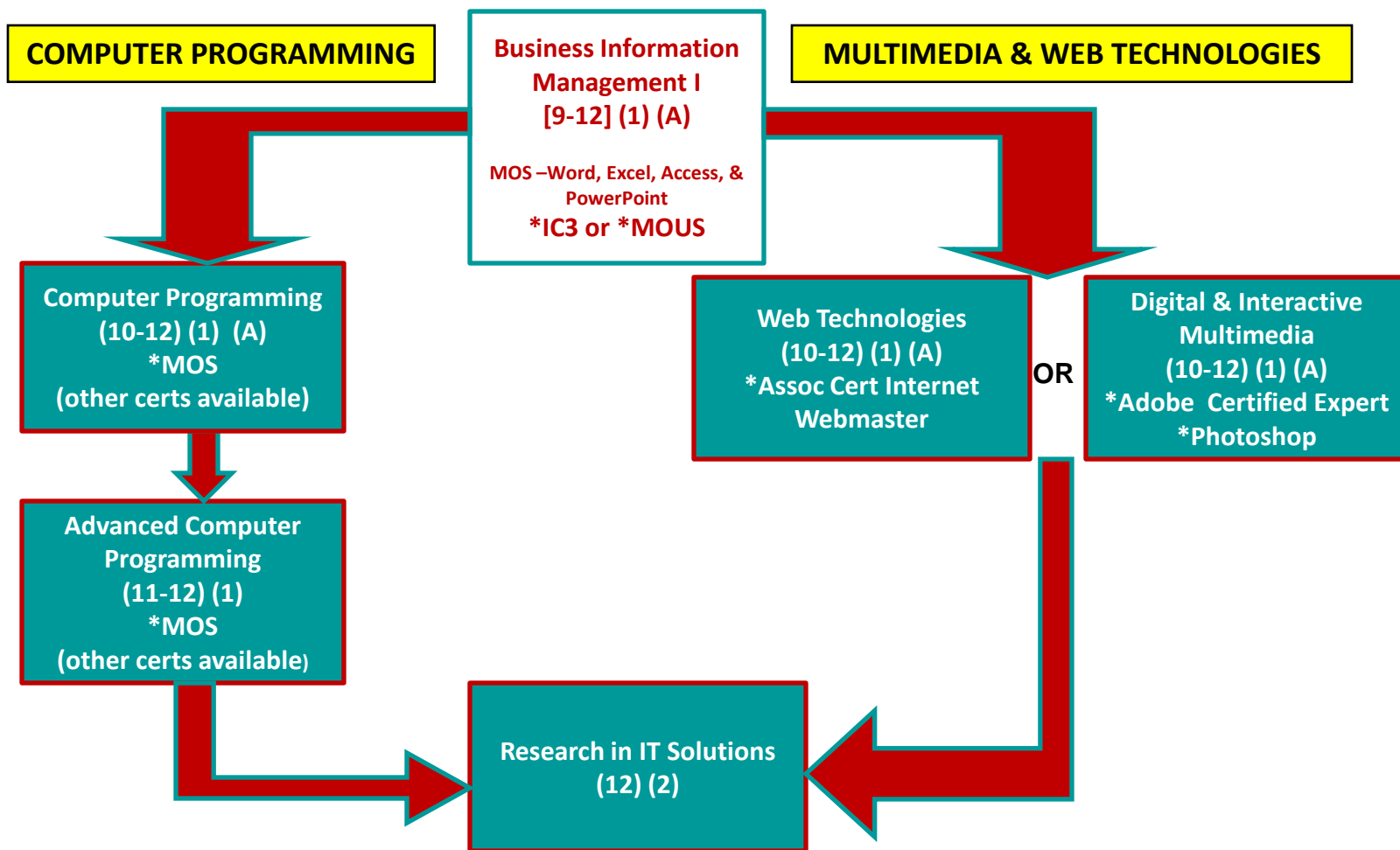
A = Advanced Technical Credit. *License or Certification

Human Services

CHILD CARE MANAGEMENT



Information Technology



Law, Public Safety, Corrections and Security

CORRECTIONAL SERVICES

Principles of Law, Public Safety, Corrections
& Security
[9-12] (1)

Law Enforcement I
[10-12] (1) (A)

Correctional Services
[11-12] (1) (A)
*Correctional Officer

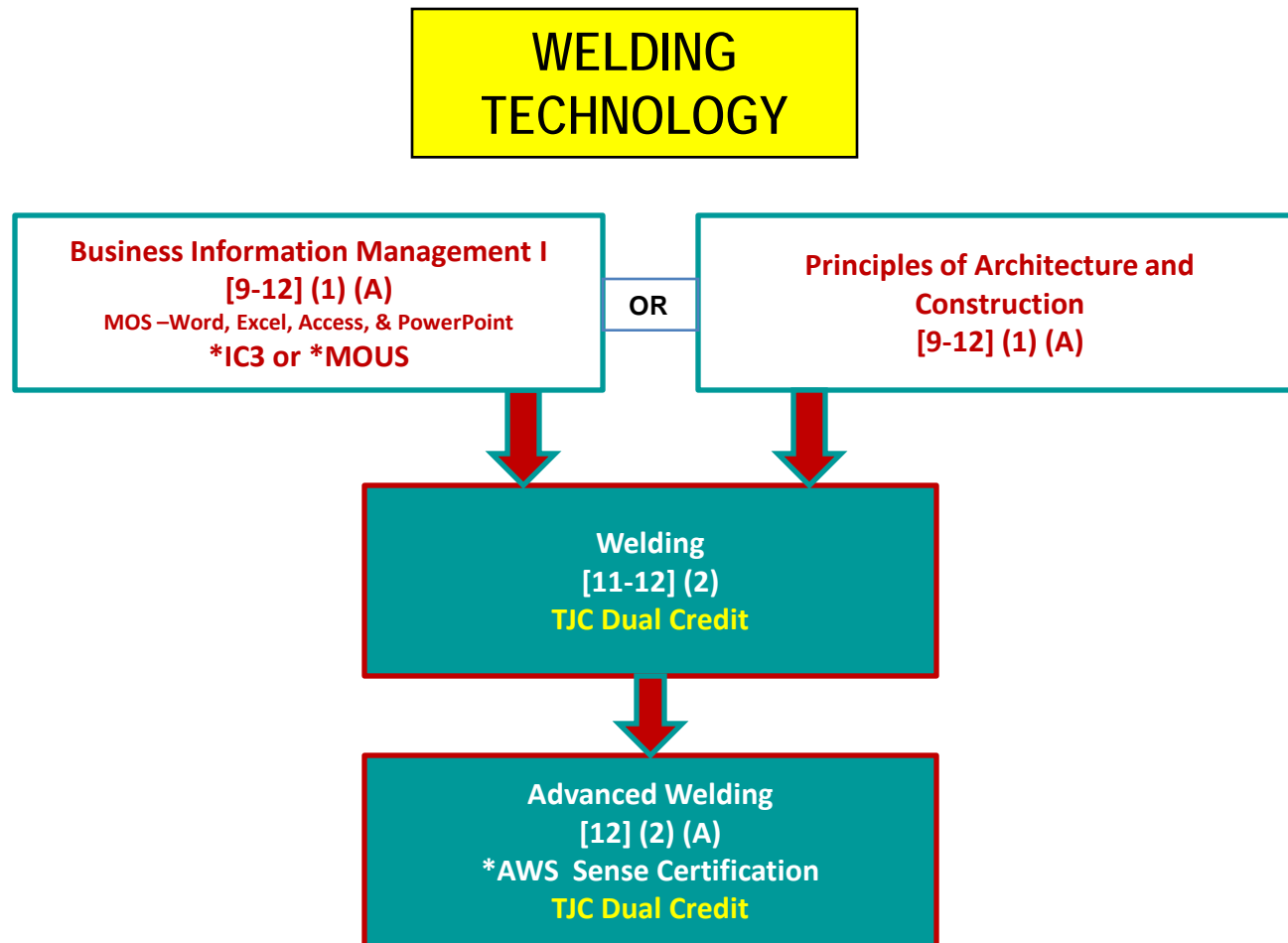
Court Systems and
Practices
[11-12] (1) (A)

OR

Law Enforcement II
[11-12] (1) (A)

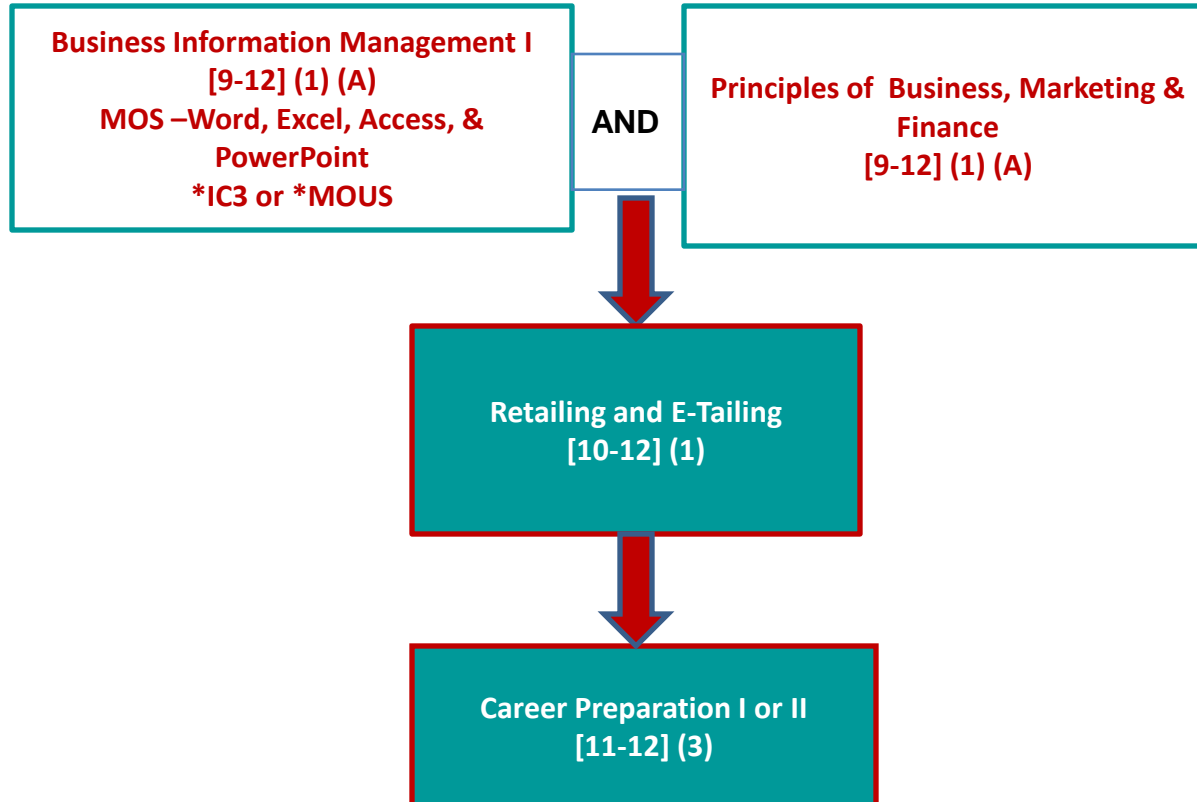
A = Advanced Technical Credit. *License or Certification

Manufacturing



Marketing

MARKETING CAREERS



Science, Technology, Engineering and Mathematics (STEM)

ENGINEERING
(Project Lead the Way)

Completion of THREE courses from the following sequence will substitute as the Technology Application requirement for graduation.

Intro to Engineering Design
[9-12] (1) (A)

Principles of Engineering
[10-12] (1)

**Civil Engineering &
Architecture**
[11-12] (1) (A)

**Engineering Design &
Development**
[12] (1)

Transportation, Distribution, & Logistics

**AUTOMOTIVE
TECHNOLOGY**

Business Information Management I
[9-12] (1) (A)
*MOS –Word, Excel, Access, & PowerPoint
*IC3 or *MOUS

Energy, Power, and Transport. Systems [10] (.5) TJC Cont Education Credit (when taken together	Principles of Trans., Distr., & Logistics [10] (.5) TJC Cont Education Credit (when taken together
---	---

AND

Automotive Technology
[11] (2)
TJC Dual Credit

Advanced Automotive Technology
[12] (2) (A)
*NATEF Certification, Advanced Engine Performance Specialist,
Hydraulics Specialist Certification
TJC Dual Credit

Middle School

*These courses are not for High School credit and are not listed in pre-requisite order.

CAREERS

Exploring Careers 7
[7] (.5)
12700300
(generic career exploration)

Exploring Careers 8
[8] (.5)
12700300
(generic career exploration)

Career Portals
[7- 8] (.5)
12700400
(all clusters)

CLUSTER-SPECIFIC CAREER PORTALS

All for Grades 7 – 8; (.5)

CP – Ag. Food and Natural Resources
CP – Architecture and Construction
CP – Arts, A/V Tech. and Commun.
CP – Business, Mgmt. and Admin.
CP – Education and Training
CP – Finance
CP – Government and Public Admin.
CP – Health Science
CP – Hospitality and Tourism
CP – Human Services
CP – Information Technology
CP – Law, Public Safety, Corrections and Security
CP – Manufacturing
CP – Marketing
CP – STEM
CP – Transportation, Distrib., Logistics

*These courses may be taken for High School credit.
(Must be taught by a high school certified CTE teacher.)

Gateway to Technology J (1) N1303741

Touch Systems Data Entry [8] (.5-1) 13011300

Principles of Ag, Food & Natural Res. [8] (.5-1) 13000200

Principles of Architecture & Constr. [8] (.5-1) 13004200

Principles of Arts, A/V Tech. & Comm. [8] (.5-1) 13008200

Principles of Business, Mktg. and Finance [8] (.5-1)
13011200

Principles of Education & Training [8] (.5-1) 13014200

Principles of Health Science [8] (.5-1) 13020200

Principles of Hospitality & Tourism [8] (.5-1) 13022200

Principles of Human Services [8] (.5-1) 13024200

Principles of Information Technology [8] (.5-1) 13027200

Principles of Law, Publ. Safety, Corr. & Sec. [8] (.5-1)
13029200

Principles of Manufacturing [8] (.5-1) 13032200

Principles of Trans., Distr. & Logistics [8] (.5-1) 13039200